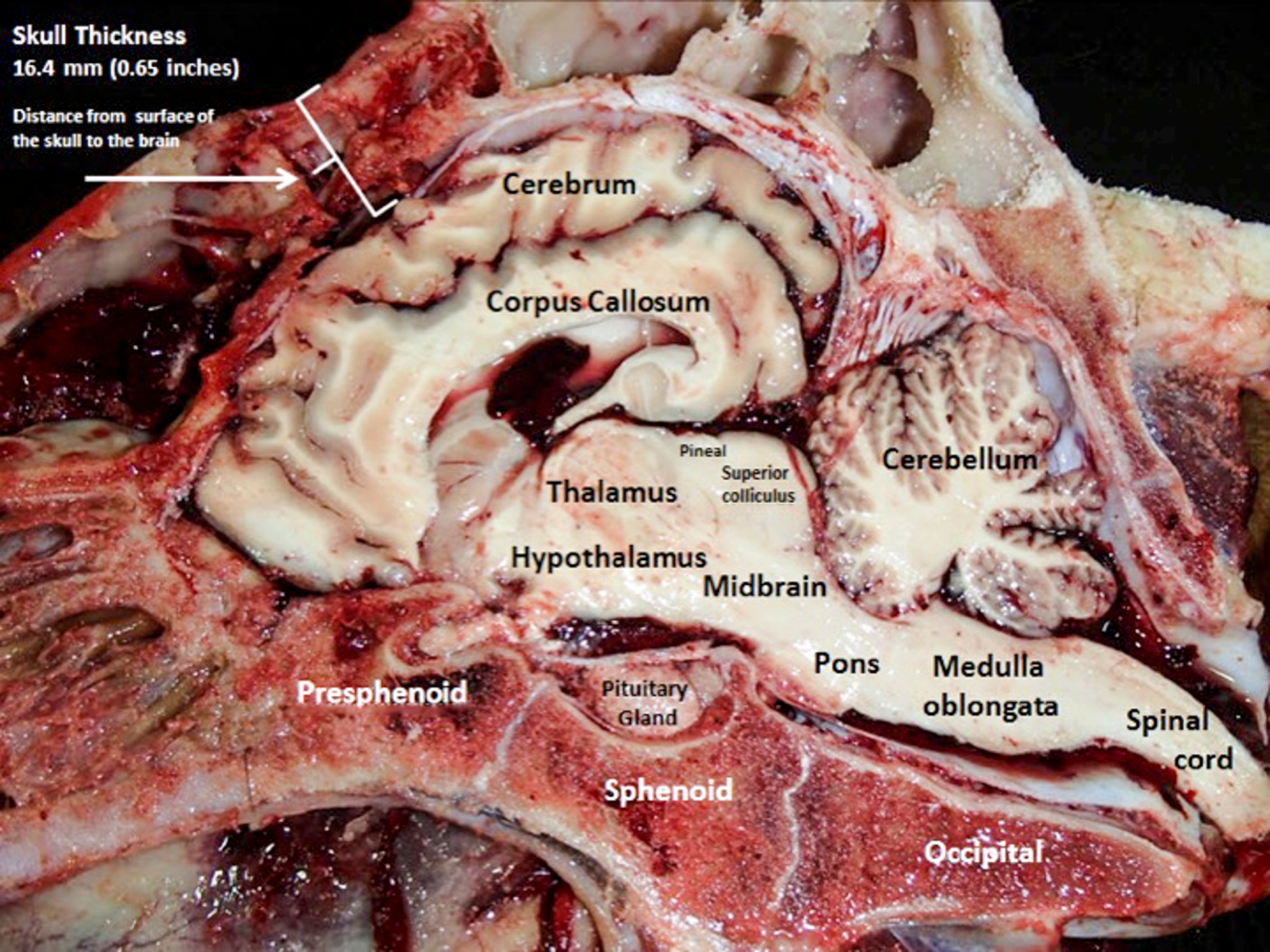


Skull Thickness
16.4 mm (0.65 inches)

Distance from surface of
the skull to the brain



Cerebrum

Corpus Callosum

Thalamus

Hypothalamus

Presphenoid

**Pituitary
Gland**

Sphenoid

**Pineal
Superior
colliculus**

Midbrain

Pons

**Medulla
oblongata**

Cerebellum

**Spinal
cord**

Occipital